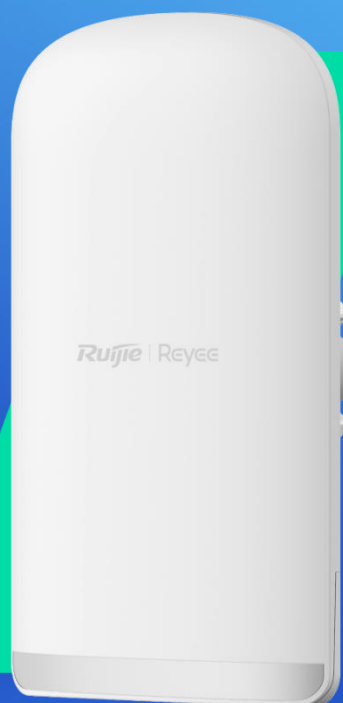


RG-EST350G

5 GHz, PTP/PTMP Wireless Bridge With 3 x 10/100/1000 Mbps Ports

DATASHEET

[Explore More ▶](#)



Highlights

- Automatic PTP Pairing;
- RG-EST350G supports 3 power supply options: 802.3af/at, Passive PoE, DC;
- Supports TDMA;
- Supports Self-Organizing Network

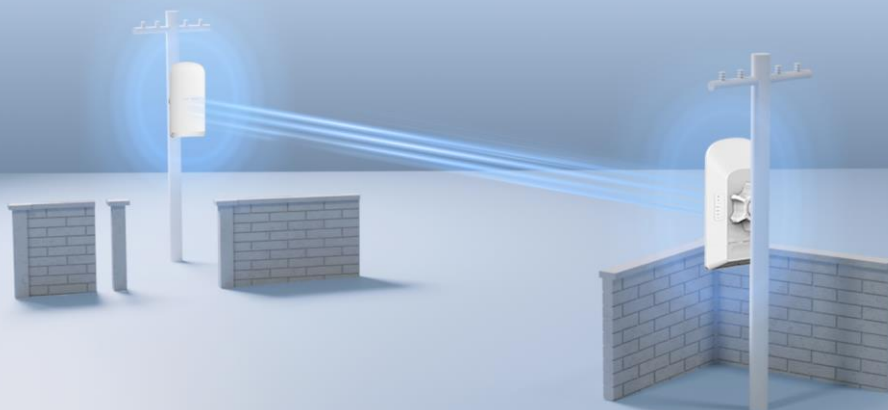
Highlight Features

RG-EST350G

5 km Working Distance EST Bridge




Automatic PTP Pairing




5 GHz, 867 Mbps


H: 31°, V: 14°


16 dBi


5 km distance


IP55
Weatherproof


TDMA

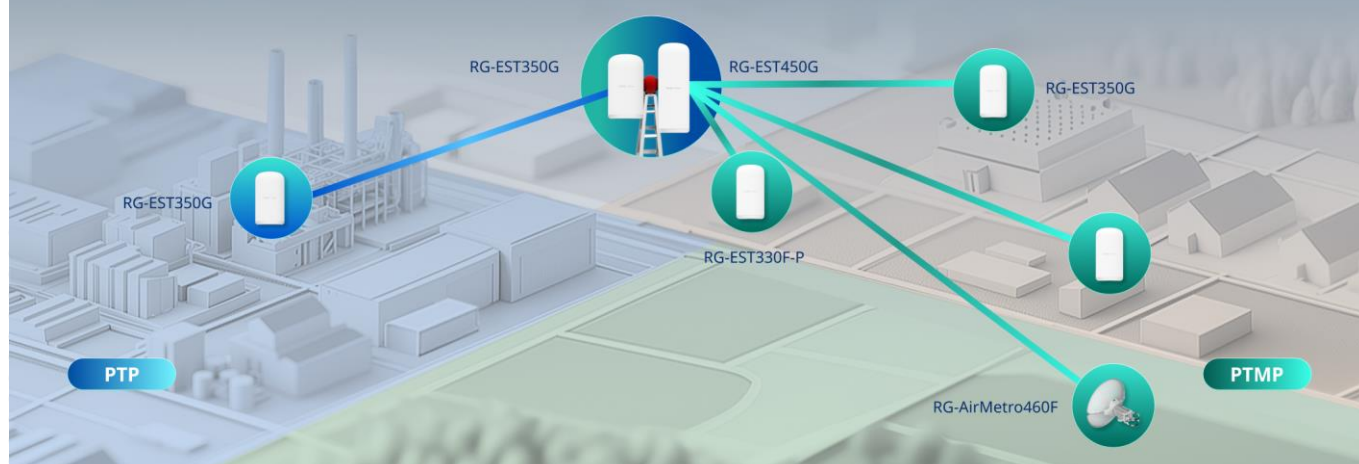
Highlight Features

Triple Power Input Options for Flexible Deployment



Bridging for TDMA-Powered Devices of Different Series

The new EST and AirMetro can be mixed for bridging with TDMA enabled



Cloud, Make Your Business Easy

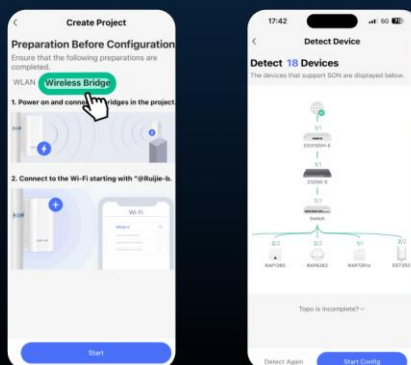
SON

Alignment Tool

Spectrum Scan

Monitoring &
Configuration

Quick Self-Organizing Network for Bridge



/ Specifications

Model	RG-EST350G
Hardware Features	
Radio Design	5 GHz dual-stream 2.4 GHz single-stream
2.4 GHz Band	Yes
5 GHz Band	Yes
Protocol and Standard	5 GHz: 802.11ac/n/a 2.4 GHz: 802.11b/g/n
Wi-Fi Standard	Wi-Fi 5
Spatial Streams	5 GHz dual-stream, 2x2 MIMO 2.4 GHz single-stream
2.4 GHz Channel Width	Auto/20/40 MHz
5 GHz Channel Width	Auto/20/40/80 MHz
Receiver Sensitivity	11a: -89 dBm (6 Mbps), -80 dBm (24 Mbps), -76 dBm (36 Mbps), -71 dBm (54 Mbps); 11n: -83 dBm@MCS0, -65 dBm@MCS7, -83 dBm@MCS8, -65 dBm@MCS15; 11ac: -86 dBm (MCS0), -63 dBm (MCS9)
Nominal Receive Sensitivity @20 MHz Channel	-91 dBm (MCS0) to -57 dBm (MCS9)
Nominal Receive Sensitivity @40 MHz Channel	-83 dBm (MCS0) to -57 dBm (MCS9)
Nominal Receive Sensitivity @80 MHz Channel	-76 dBm (MCS0) to -51 dBm (MCS9)
Modulation Levels (Adaptive)	MCS0 (BPSK) to MCS9 (256QAM)
Wi-Fi Protocols (2.4 GHz)	Wi-Fi 4
Wi-Fi Protocols (5 GHz)	Wi-Fi 5 (IEEE 802.11ac)
Wireless Data Rate	1017 Mbps
Wireless Data Rate (2.4 GHz)	150 Mbps

Model	RG-EST350G
Wireless Data Rate (5 GHz)	867 Mbps
Frequency Bands	2.4 GHz: 802.11b/g/n: 2.4000 GHz to 2.483 GHz 5 GHz: 802.11a/n/ac: 5.150 GHz to 5.350 GHz, 5.470 GHz to 5.725 GHz, 5.725 GHz to 5.850 GHz Note: Country-specific restrictions apply.
2.4 GHz Max. Transmit Power	20 dBm
5 GHz Max. Transmit Power	26 dBm
Surge Protection	Common mode: ±4 kV Differential mode: ±2 kV
Dimensions (W x D x H)	240 mm x 133mm x 108 mm (9.45 in. x 5.24 in. x 4.25 in.) (without bracket)
Weight	0.73 kg (1.61 lbs.)
Number of Fixed LAN Ports	3
Max. LAN Port Rate	1000 Mbps
Number of 10/100/1000BASE-T Ports	3
Reset	Yes
Status LED	Yes
Power Supply	12V DC or 24 V passive PoE or 802.3af/at
Local Power Supply	Yes
PoE Out	No
Supported PoE Standards	802.3af/at
Antenna Type	Built-in antenna, horizontal 31°/vertical 14°
Hardware Button	1 x reset button
DC Power Connector Size	Inner Diameter: 2.10 mm ± 0.1 mm (0.083 in. ± 0.004 in.) Outer Diameter: 5.50 mm ± 0.1 mm (0.217 in. ± 0.004 in.) Depth: 10.0 mm ± 0.5 mm (0.394 in. ± 0.020 in.)
DC Voltage/Current	12 V/1.2 A, 24 V/0.6 A
LEDs	1 x system LED 3 x port LEDs

Model	RG-EST350G
	3 x signal strength LEDs
2.4 GHz Antenna Gain	2 dBi
5 GHz Antenna Gain	16 dBi
Power Consumption	< 12 W
IP Rating	IP55
Color	Elegant white
Operating Temperature	−30°C to +65°C (−22°F to +149°F) (−40°C to +80°C [−40°F to +176°F] in publicity materials)
Storage Temperature	−40°C to +85°C (−22°F to +185°F)
Operating Humidity	5% RH to 95% RH (non-condensing)
Storage Humidity	5% RH to 95% RH (non-condensing)
MTBF	> 400000 hours
Working Distance	5 km
Bridging Performance	230 Mbps/1 km (HT40) 200 Mbps/3 km (HT40) 150 Mbps/5 km (HT40)
RSSI (dBm)	−54 dBm/1 km −62 dBm/3 km −66 dBm/5 km
Throughput & Camera Limits: 3 MP	50/1 km 45/3 km 20/5 km
Throughput & Camera Limits: 4 to 5 MP	30/1 km 25/3 km 12/5 km
Throughput & Camera Limits: 6 to 7 MP	20/1 km 13/3 km 8/5 km
Throughput & Camera Limits: 7 to 8 MP	15/1 km 12/3 km 6/5 km

Model	RG-EST350G
Management Radio	2.412 GHz ~ 2.472 GHz
Number of PtMP Links	5
ESD Protection	ESD tolerance: contact discharge=8 kV, air discharge=15 kV
Certification	CE
Software Features	
Operating Mode	BaseStation/CPE
TDMA	Fixed Mode/Flexible Mode
WLAN Security	WPA2-PSK
Management SSID	@Ruijie-bxxxx
Management SSID for Internet Access	Yes
SSID Hiding	Yes
Spectrum Scan	Yes
Antenna Aligment	Yes
One-Touch Pairing	Yes
WMM	Yes
Storm Control	Yes
VLAN Packet Transmit	Yes
DHCP Server	Yes
DHCP Client	Yes
Network Diagnosis	Ping/Traceroute/DNS Lookup
Time & Date	Yes
Firmware Upgrade	Yes
Backup/Restore	Yes
Cloud Management	Yes

Model	RG-EST350G
Power Configuration	Yes
Country/Region Code	Yes
Remote Restart	Yes
SON (Self-organizing Networking with all Reyeer Devices)	Yes
SNMP	Yes
Link Aggregation	No
Bridge Speed Test	Yes
Max. Number of Devices on a SON	200
Ping	Yes
Traceroute	Yes
AI Heatmap	Yes

Package Contents

Model	RG-EST350G
Wireless Bridge/Antenna	2
PoE Injector	2
DC Power Adapter	2
Mounting Bracket	2
Gross Weight	2.55 kg (5.62 lbs.)
Package Dimensions (W x D x H)	394 mm x 311 mm x 104 mm (15.51 in. x 12.24 in. x 4.09 in.)

Ruijie | Rcycc

 **Redefine your easy network**

Copyright ©2000-2024 Ruijie Networks Co., Ltd. All rights reserved.

No part of this document may be reproduced or transmitted in any form or any means without prior written consent of Ruijie Networks Co., Ltd.

Notice

This content is applicable only to regions outside the China mainland. Ruijie Networks Co., Ltd. reserves the right to interpret this content.

The information contained herein is subject to change without notice. Nothing herein should be construed as constituting an additional warranty. Ruijie Networks Co., Ltd. shall not be liable for technical or editorial errors or omissions contained herein.



Ruijie Networks Co., Ltd.

Official Website: <https://Rcycc.Ruijie.com>